

# 4G router WIFI ZOOM IP Camera Instruction

## 1,How to put SIM card into IP camera

as shown in Figure 1

2,Connect the camera power, please do not plug in the network cable. (If you plug in the network cable, the camera will be connected to the wired network first, and the 4G network will not work).and Please wait 1 minute, the 4G camera will automatically complete the 4G network connection.

## 3, How to add camera on smartphone

Download “Camhi” / “Camhipro” ( for IOS and android ) from APP store, open it and click add. Scan the QR code above to enter the download page



1

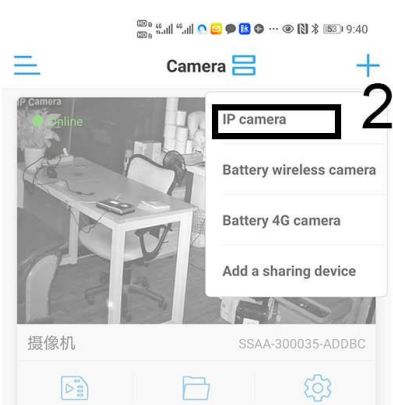


CamHi APP Download	Android OS Manual download
Android OS Iphone OS	Iphone OS Manual download
Wireless IP camera video tutorial	Video Manual download
Wireless P2P IP camera video tutorial	Video Manual download
Windows PC Software Download	Windows PC Software Download
Россия	Руководство камеры создание Видеозаписи CamHi (обзор) Самостоятельное обучение функциям по адресу: http://www.camhi.com

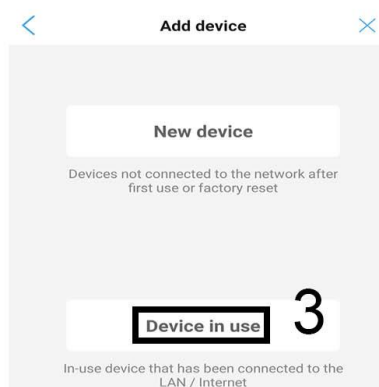
4,Install Camhipro mobile APP and add camera:



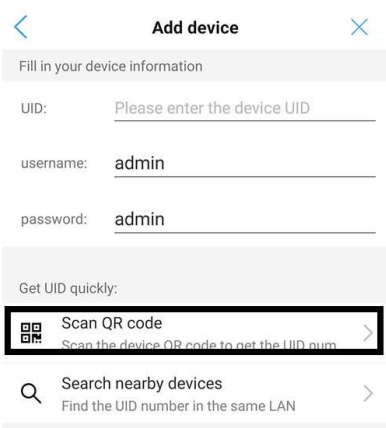
1



2



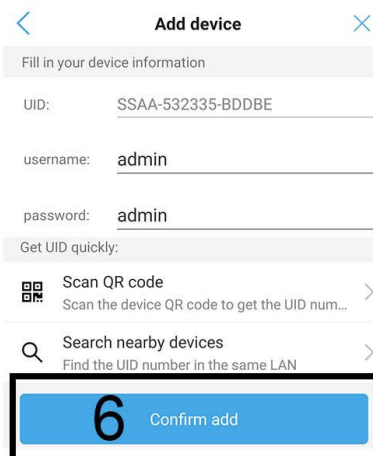
3



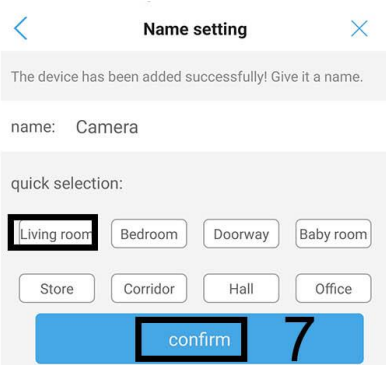
4



5



6



7



8

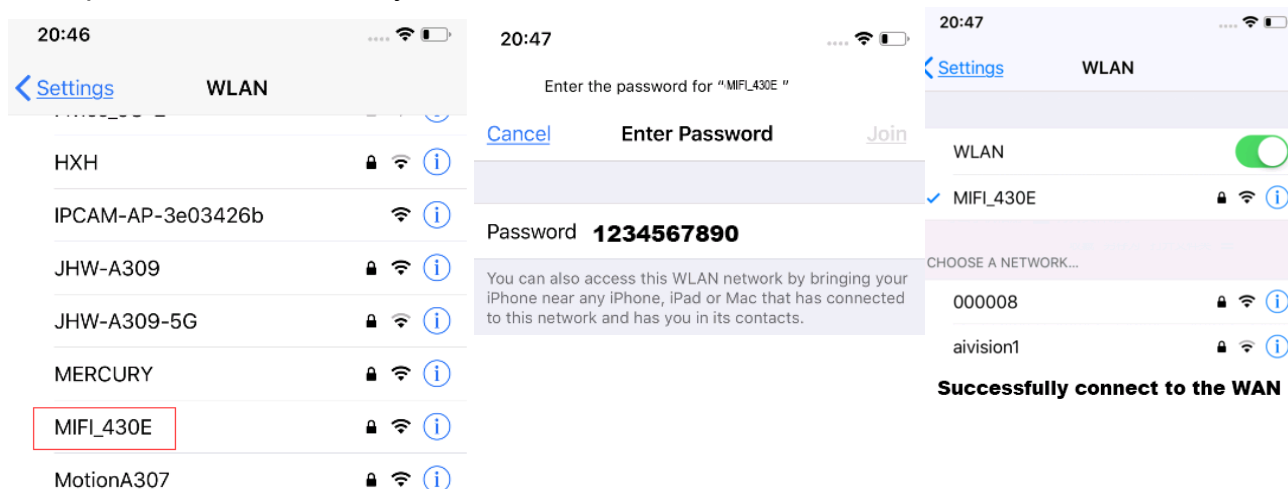


Now 4G camera Configure the connection successfully.

## 5, How other network devices connect to the WAN through 4G cameras?

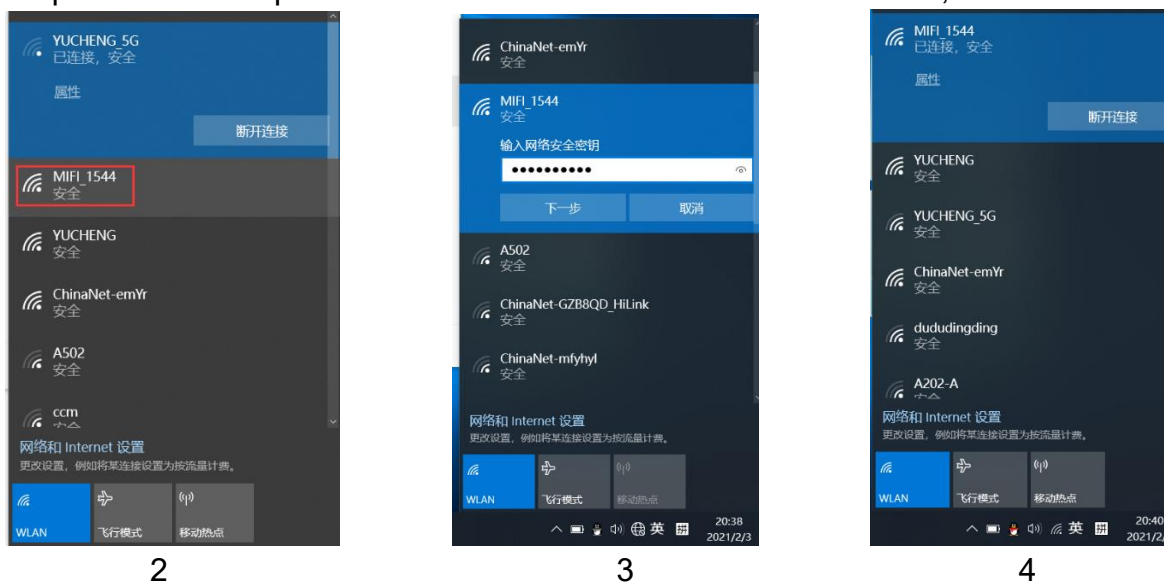
Take a mobile phone through a 4G camera to connect to the WAN as an example.

Open the WIFI settings of the mobile phone, find the wireless WIFI signal of the 4G camera, the WIFI name is MIFI-XXX, select this wireless WIFI signal, and enter the WIFI password: 1234567890. Then save, the mobile phone will successfully connect to the WAN. As shown below



## 6, How to log into 4G router and manage router

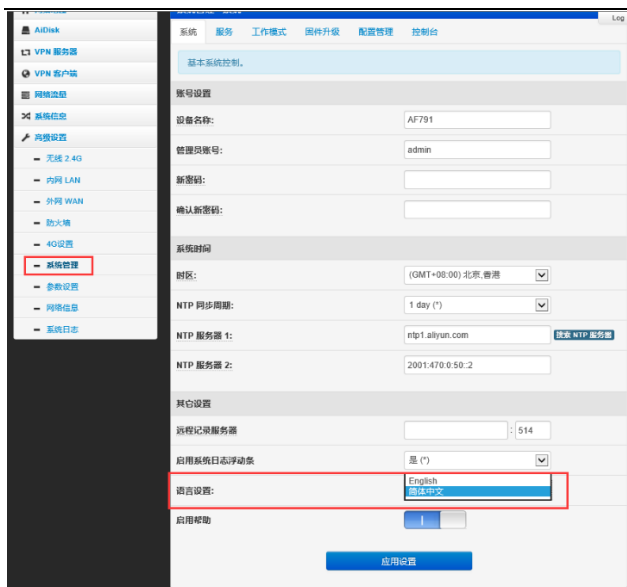
A, Use a computer or mobile phone to connect to the WIFI of the 4G camera,



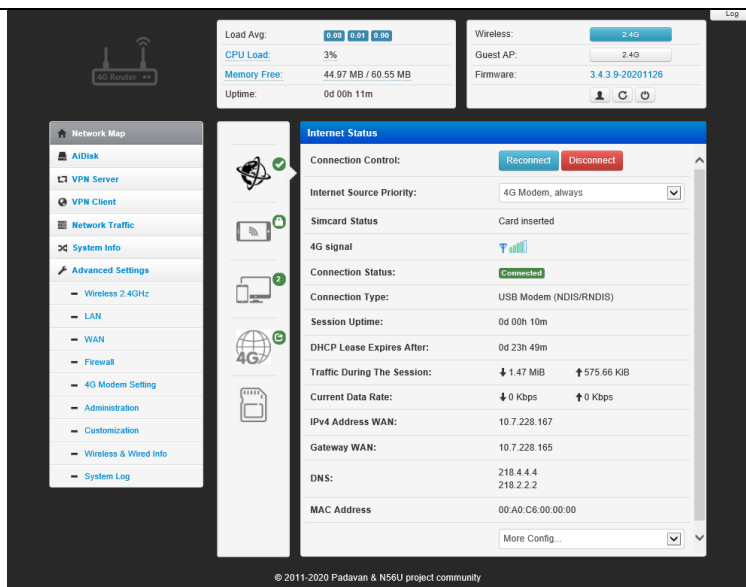
Use a computer to search for the WIFI signal of the camera. The WIFI name is the WIFI signal starting with MIFI-X, as shown in Figure 3. Select this WIFI signal and enter the connection password: 1234567890. Click the connect button, the computer will automatically connect to the camera via WIFI. As shown in Figure 4, the WIFI connection is successful.

B, Open the browser, enter the login address of the 4G router in the address bar of the browser: 192.168.2.1, enter the login user: admin, login password: admin, as shown in Figure 5.

If the system is displayed in Chinese, please change the language to English, as shown in Figure 5: Click: “系统设置”,> “语言设置” select English



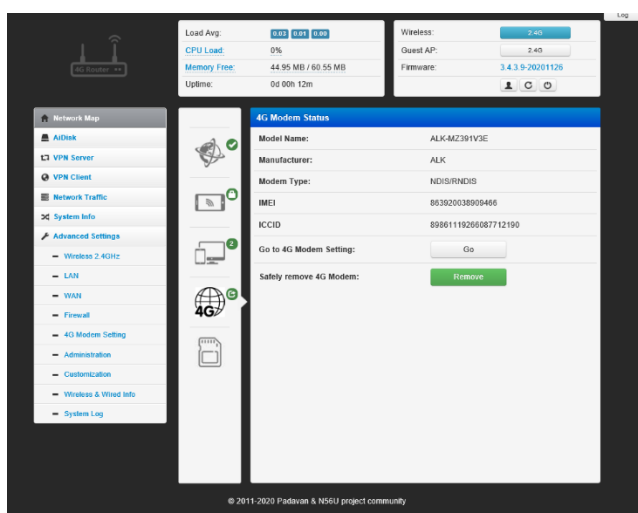
5



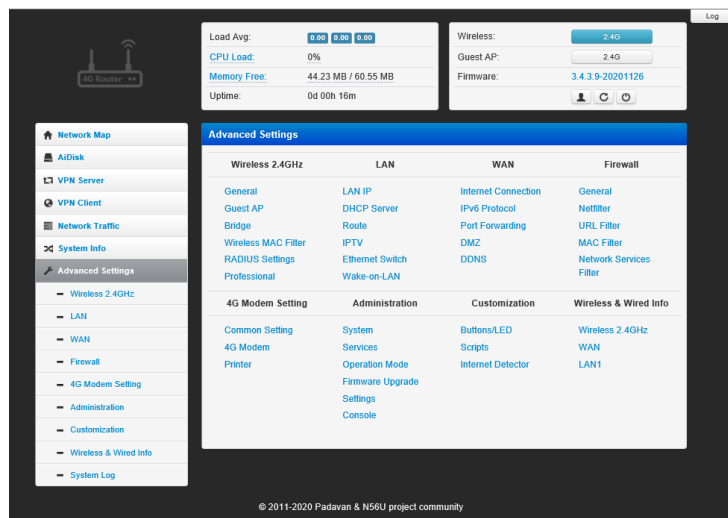
6

C, Figure 5 shows the connection status of the 4G router. If the 4G connection is unsuccessful, please check if your 4G SIM card is normal.

D, You can now start configuring the 4G router



7



8